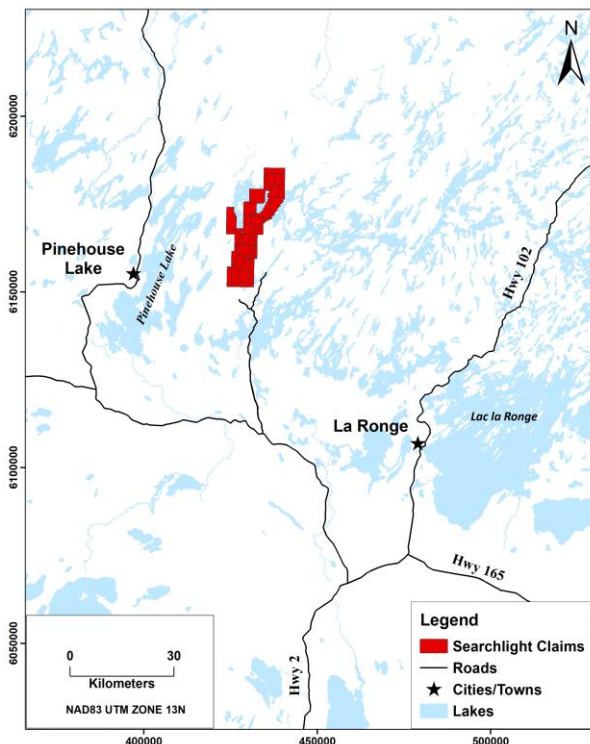


Duddridge Lake Uranium Deposit

- **Historic NI43-101 inferred resource estimate**
- **Road accessible, drill-ready, near surface deposit**

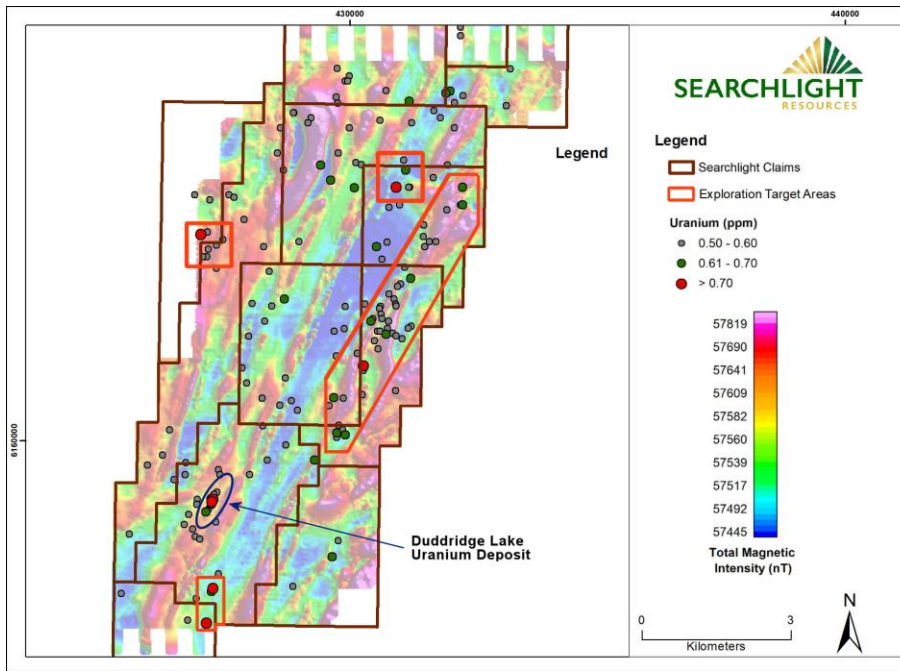
- Historic NI43-101 inferred resource estimate of 227,880 tonnes with a grade of 2.14 lbs/tonne U_3O_8 , completed by Fission Energy Corporation in 2007.
- Approximately 50 DDH to date, geophysics and soil sampling including MMI
- Potential along strike and at depth; past drilling less than 100 m below surface.
- Assays of 9.8% U_3O_8 , 1.6% Cu, 0.2% V, 0.2 oz/ton Au and 7.0 oz/ton Ag in historic boulder samples (SMDI 0700a)
- Best historic drill intersection was in 2 drill holes, 200 ft (61.0 m) apart, which cut a zone averaging 2.7 lb/ton U_3O_8 over 26 ft (7.9 m). (SMDI 0700a)
- Permanent road access 12 km from property, then all-weather track to deposit.
- Most southern uranium deposit in Saskatchewan.
- Stratabound uranium and copper mineralization, with polymetallic mineral occurrences in red bed arkosic metasediments.
- Located in Saskatchewan which is ranked #1 in Canada for Mining Investment.



Future Exploration

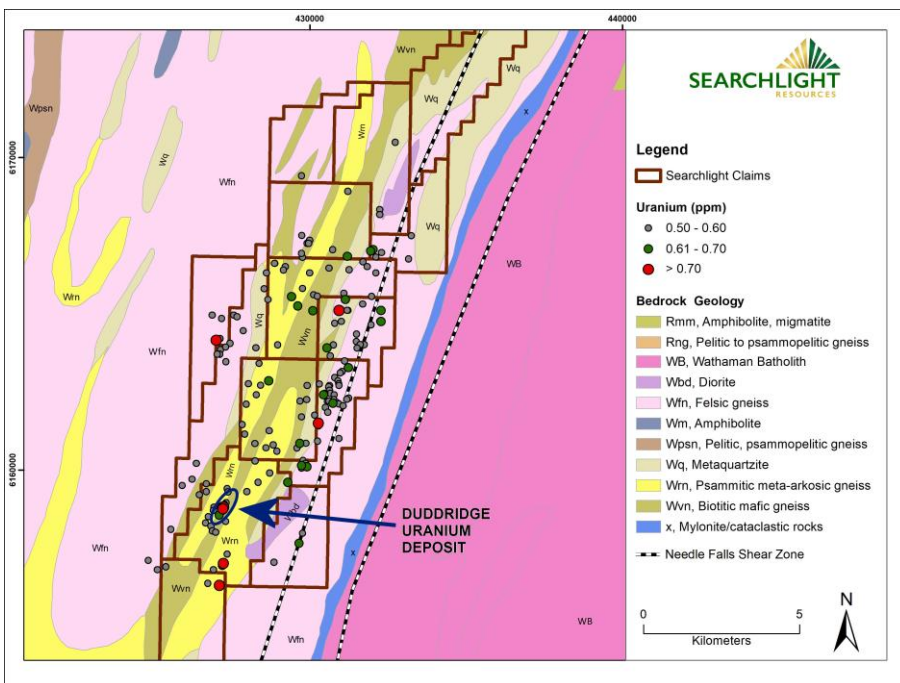
- Drill targets under known deposit.
- Drill targets north and south along strike of known deposit.
- Conduct IP survey along strike to tie all known data together.
- Continue MMI surveys along strike.
- Explore Sandfly Lake U/Cu potential.

Duddridge Lake Uranium Deposit



Airborne Radiometric and Magnetic survey's over Duddridge Lake claims

- Radiometrics highlight the known Duddridge uranium deposit
- Magnetics shows exploration potential along strike from deposit
- Shows exploration potential parallel zone east of deposit
- Radiometric survey penetrates less than a metre through overburden so limited in areas of continuous overburden

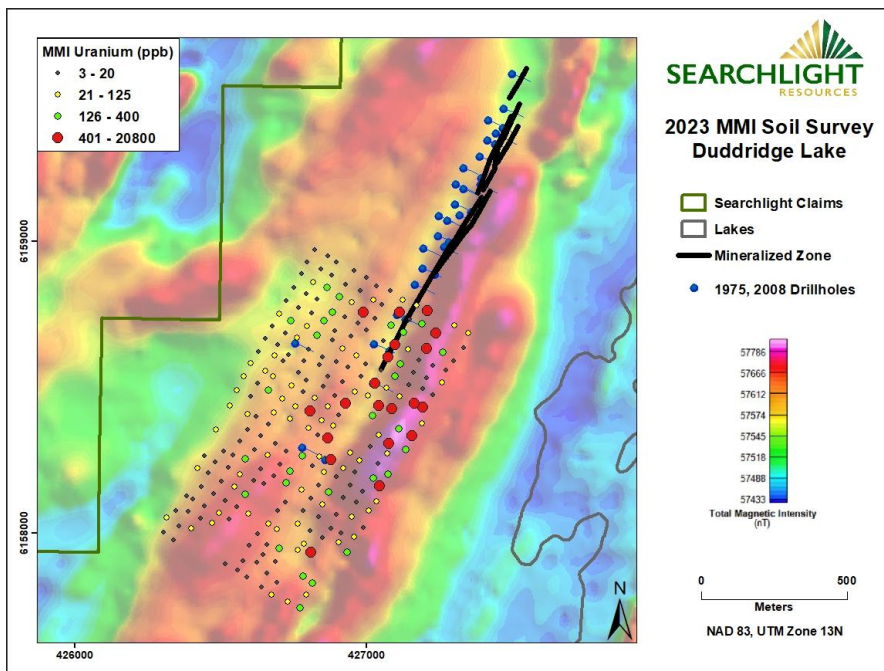
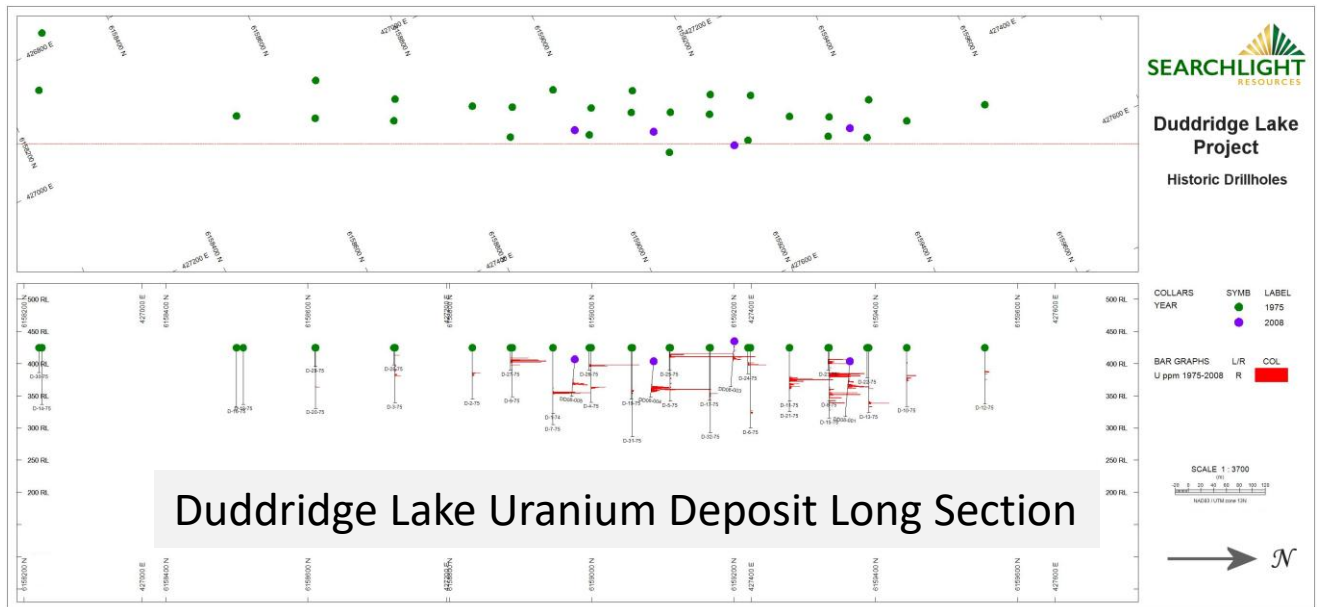


Airborne Radiometric survey and regional geology over Duddridge Lake claims

- Highlights the known Duddridge uranium deposit
- Shows potential targets along geological strike from deposit.
- Mineralization is associated with carbonaceous meta-arkose which occurs as irregular lenses within a hematitic arkose
- Multiple high-grade boulders containing, U, Cu, Co & V on surface near the deposit and along strike.

Technical aspects of this factsheet have been reviewed and approved by the Qualified Person, Stephen Wallace P.Geo., hereby designated as a QP under National Instrument 43-101. **Forward Looking Statement:** This factsheet may contain, in addition to historical information, forward-looking statements. These forward-looking statements are identified by their use of terms and phrases such as "believe," "expect," "plan," "anticipate" and similar expressions identifying forward-looking statements. Investors should not rely on forward-looking statements because they are subject to a variety of risks, uncertainties and other factors that could cause actual results to differ materially from Searchlight's expectations, and expressly does not undertake any duty to update forward-looking statements. These factors include, but are not limited to the following, limited operating history, proposed exploration and/or drill programs and other factors which may cause the actual results, performance or achievements of Searchlight to be materially different from any future results, performance or achievements expressed or implied by such forward-looking statements.

Duddridge Lake Uranium Deposit



Mobile Metal Ion (MMI) and Airborne Magnetic Surveys

- ~50 DDH in mineralized zone and along strike
- Known mineralized zone is located on western side of magnetic high.
- South of the mineralized zone the magnetic high shift to the east
- MMI shows potential along strike and similar shift to the east as magnetics
- Exploration drill targets along strike and to depth

Searchlight Resources is a Project Generation Exploration Company focused on prospects in Saskatchewan.

Contacts: Alf Stewart - Chairman, Cell: 236-833-0075

Stephen Wallace - CEO, Cell: 416-671-5870

Email: info@searchlightresources.com