

WHY INVEST?

- Focused on Saskatchewan, a low risk jurisdiction with world class geology
- Compelling portfolio of mining assets includes uranium, gold, rare earths, nickel, and copper-zinc VMS
- Targeting quality projects close to infrastructure for low cost & efficient exploration & development
- Experienced team involved in significant gold and uranium discoveries

HIGHLIGHTS

- Significant uranium and rare earth targets identified at Kulyk Lake Project
- Bootleg Lake Gold Project has 52 km² of claims, with Flin Flon mining complex nearby and four past producing gold mines within one consolidated property
- Uranium and battery metals in high demand for clean energy and low-carbon technology
- Saskatchewan has the highest grades of uranium in the world and is Canada's best jurisdiction for uranium production



SHARE STRUCTURE

Shares Outstanding: **119,586,640**

Options Outstanding: **10,950,000**

Warrants Outstanding: **36,385,229**

Fully Diluted: **166,921,869**

Management & Insiders: 8%

MANAGEMENT

Stephen Wallace, P. Geo, President, CEO

Alf Stewart, Chairman

Bruce Fair, Director

Peter Dueck P. Geo, Director

John Kerr, P.Eng., Geologist, Director

Brian Crawford, CPA, CFO

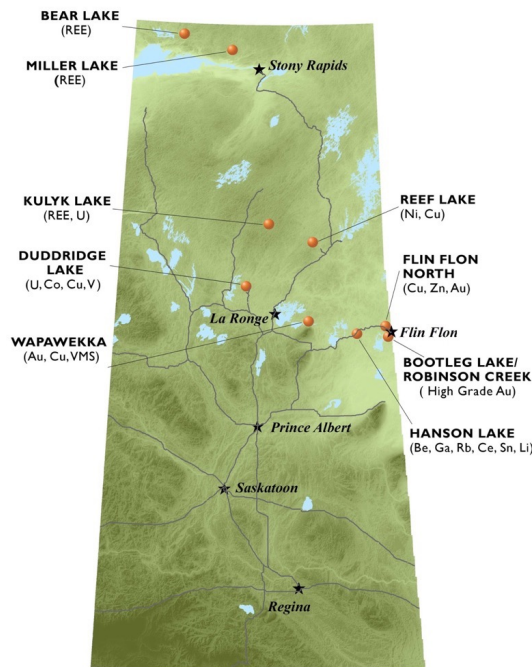
CONTACT US TO LEARN MORE:

Phone: 604-331-9326

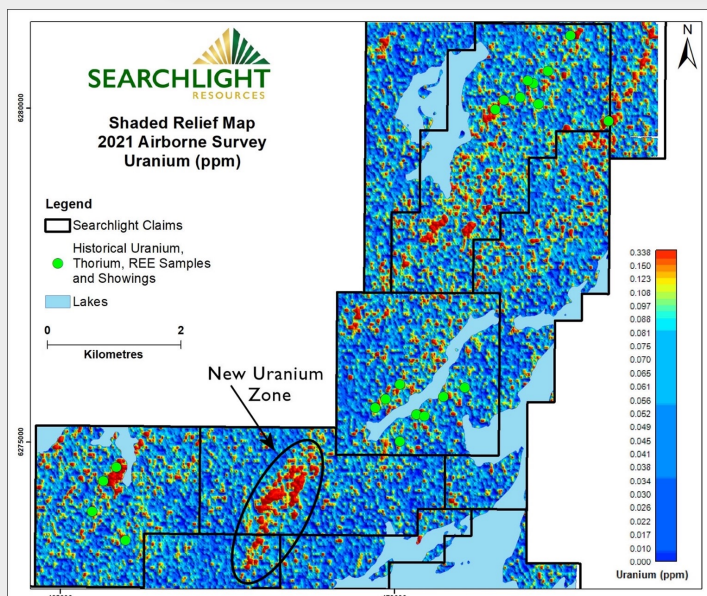
info@searchlightresources.com

WHY SASKATCHEWAN?

- ✓ Established mining infrastructure
- ✓ Cooperative government
- ✓ Mining-friendly
- ✓ Timely permitting
- ✓ Past-producing mines
- ✓ Experienced workforce
- ✓ Safe jurisdiction
- ✓ High-grade uranium
- ✓ World class geology



Kulyk Lake Uranium & Rare Earths Projects



- Claims block equals 317.1 km², located 65 kms south of Key Lake uranium mill
- New uranium target discovered using radiometric survey
- Kulyk Lake sits on surface in the Wollaston Domain, the most prospective uranium geology in Saskatchewan
- 100% owned, royalty free

Technical aspects of this factsheet have been reviewed and approved by the Qualified Person, Stephen Wallace P.Ge., hereby designated as a QP under National Instrument 43-101. **Forward Looking Statement:** This factsheet may contain, in addition to historical information, forward-looking statements. These forward-looking statements are identified by their use of terms and phrases such as “believe,” “expect,” “plan,” “anticipate” and similar expressions identifying forward-looking statements. Investors should not rely on forward-looking statements because they are subject to a variety of risks, uncertainties and other factors that could cause actual results to differ materially from Searchlight’s expectations, and expressly does not undertake any duty to update forward-looking statements. These factors include, but are not limited to the following, limited operating history, proposed exploration and/or drill programs and other factors which may cause the actual results, performance or achievements of Searchlight to be materially different from any future results, performance or achievements expressed or implied by such forward-looking statements.